

Topydic Small Shaft Incremental Encoder EV40A



Description

Topydic series small shaft incremental encoder-EV40A delivers outstanding performance in mechanical shock-resistance and can withstand higher axial and radial loads to suit various industrial environments. Its special position of cabling fits to the limited installation space. Combining advanced signal processing technology with multiple types of electrical output, EV40A are capable of matching various upper control computers.

Features

- Stainless steel shaft ensures safety and stability in operation
- Optional types of flange connection offers more flexibility
- Metal casting housing for greater shock resistance
- Side cabling design greatly saves the installation space and simplifies wiring
- Reverse connection protection; short circuit protection

Mechanical parameters

Shaft diameter	Φ6g6 mm
Protection class	IP66 standard, IP67 optional
Max. speed/minute	6000 rpm
Max. load capacity of the shaft	60 N axial 100 N radial
Shock resistance	50G/11 ms
Vibration resistance	10G 10~2000 HZ
Bearing life	10 ⁹ revolution
Moment of inertia	1.9×10 ⁻⁶ kgm ²
Starting torque	<0.08 Nm
Body material	Al-alloy
Housing material	Zn-alloy
Operating temperature	-20...+85 °C
Storage temperature	-25...+100 °C
Relative humidity/condensation	90%, Condensation not permitted
Weight	110 g

Regular resolution: 10, 20, 30, 40, 50, 60, 70, 80, 90, 100, 200, 300, 360, 400, 500, 512, 600, 800, 1000, 1024, 2000, 4000, 2500, 5000, 2048

Attention: the products with above resolutions are available from stock, others on request.

Electrical parameters

Output circuit	RS422	Push-pull
Resolution	Max.5000 ppr	Max.5000 ppr
Supply voltage	5±0.25 or 10...30 VDC	10...30 VDC
Power consumption(no load)	≤80 mA	≤100 mA
Permissible load(channel)	±50 mA	±30 mA
Pulse frequency	Max.800 kHz	Max. 800 kHz
Signal level high	Min. 3.4 V	Min.Ub-1.8 V
Signal level low	Max. 0.4 V	Max. 2.0 V
Rise time Tr	Max. 200 ns	Max. 1 μs
Fall time Tf	Max. 200 ns	Max. 1 μs

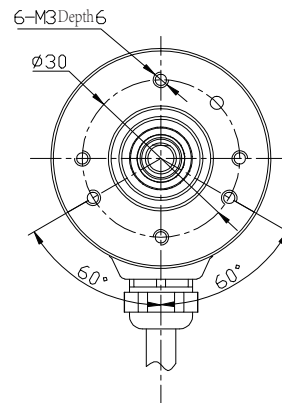
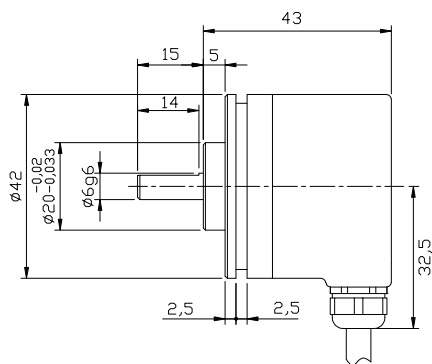
Topydic Small Shaft Incremental Encoder EV40A

Terminal Configuration

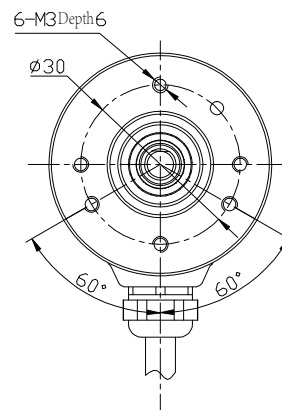
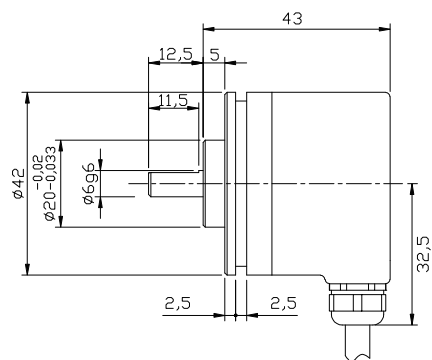
Signal	0V	+U _b	A	\bar{A}	B	\bar{B}	Z	\bar{Z}	Shield
Color	WH	BN	GN	YE	GY	PK	BU	RD	\perp
Pin	10	12	5	6	8	1	3	4	PH

Dimensions (mm)

EV40A



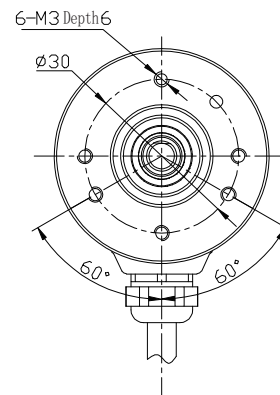
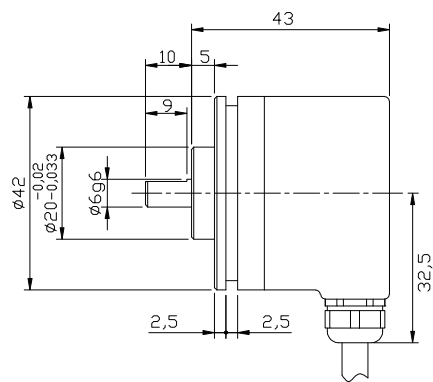
EV40B



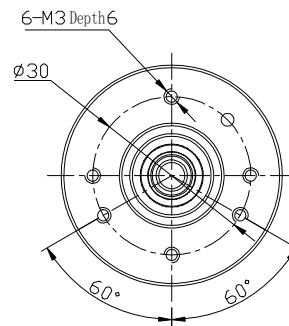
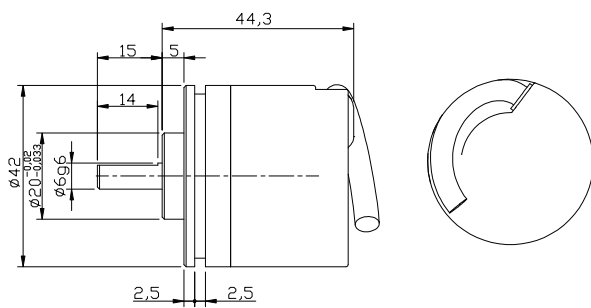
Topydic Small Shaft Incremental Encoder EV40A

Dimensions (mm)

EV40C

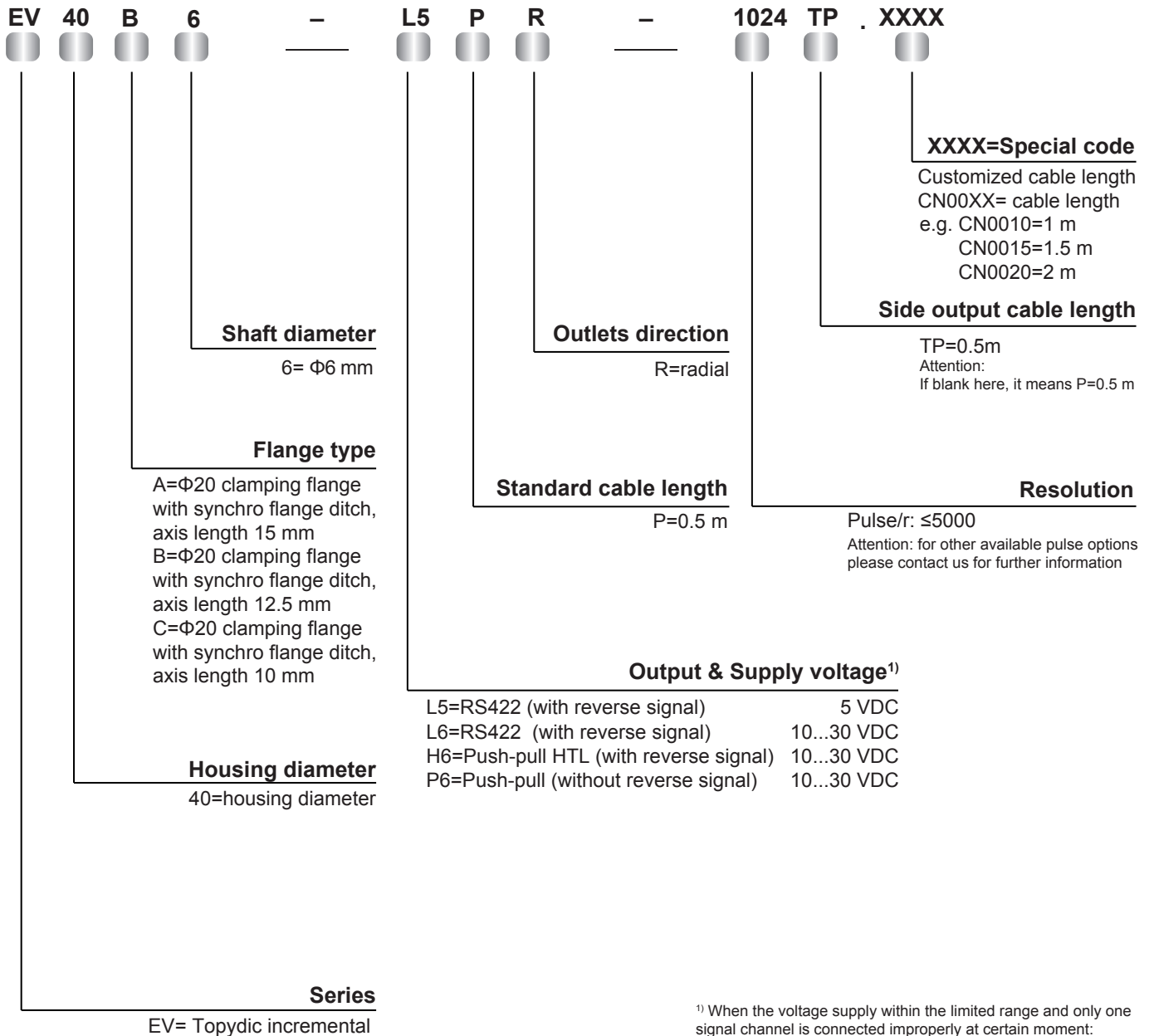


EV40A side pre-wired cable



Topydic Small Shaft Incremental Encoder EV40A

Order Code



¹⁾ When the voltage supply within the limited range and only one signal channel is connected improperly at certain moment: if $U_b=5V$, it's permitted to connect to signal channels, 0V or U_b ; if $U_b > 5V$, it's permitted to connect to signal channels or 0V.