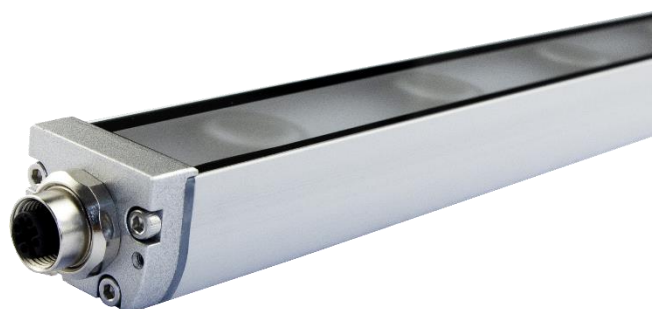
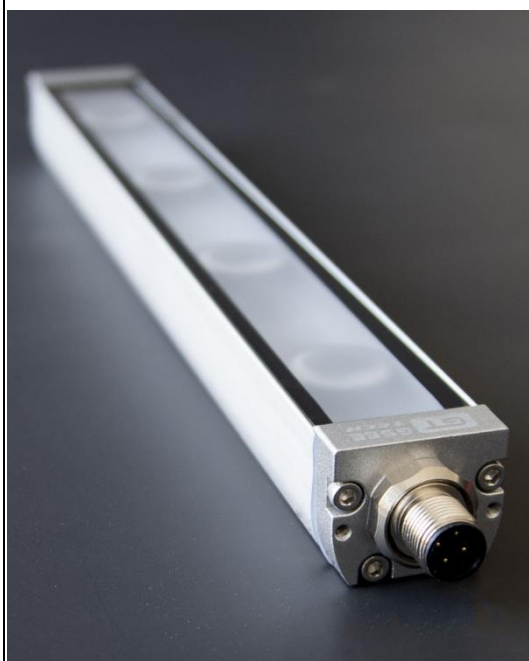
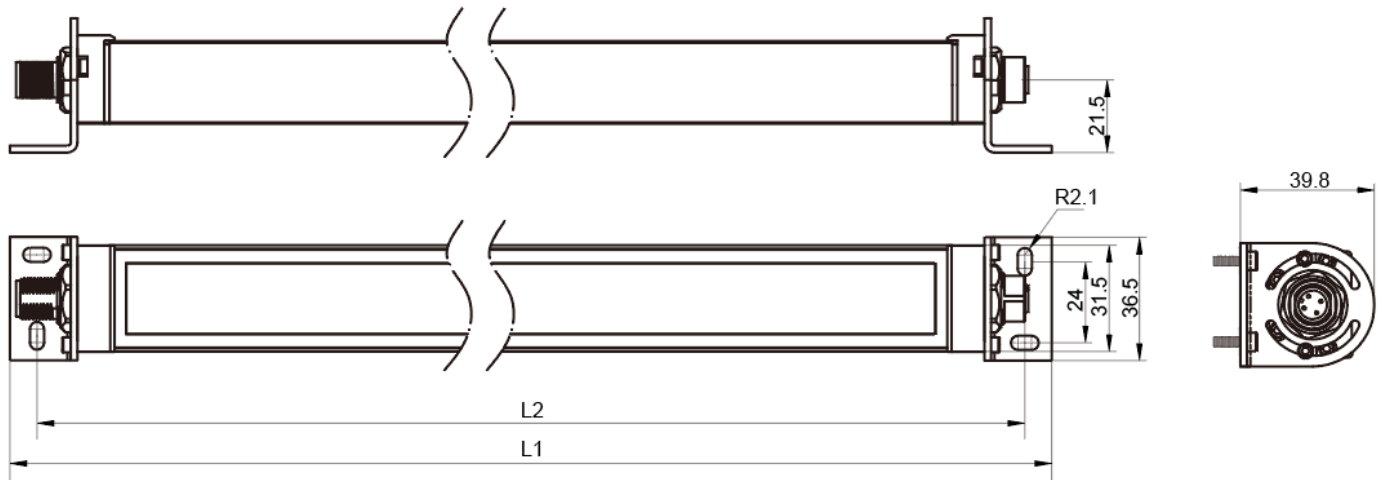


Specifications

Basic Information				
Series	Strip LED Light BLT32			
Model	BLT32W250L60-M、BLT32W250L60-MC、BLT32W500L60-M、BLT32W500L60-MC、BLT32W750L60-M、BLT32W1000L60-M			
Technical Data				
Physical Data	Material	Aluminium + Glass	Color	Silvery
	IP Degree	IP65		
	Mounting/Adjusting Angle		Vertical adjusting T Angle: $\pm 60^\circ$	
Optical Data	CCT	5700K	Ra	>80
	L70	50000H	Luminous Efficiency	>85 lm/w
	Beam Angle	38°		
Electrical Data	Power supply	DC/AC 24V	Connection	M12 plug connector, A coded
	Electrical protection grade	III	Reverse polarity protected	Yes
Other Data	Operating Conditions	-35~60°C	Storage Condition	-40~70°C

Pictures of Lamps&Sizes (mm)





Models	L1	L2	Power	Current(DC24V)	Luminous Flux	CERT	Stand alone/In series	Weight
BLT32W250L60-M	309mm	293mm	6.7W	0.28A	570lm	CE	Stand alone	0.35kg
BLT32W250L60-MC	309mm	293mm	6.7W	0.28A	570lm	CE	In series	0.35kg
BLT32W500L60-M	559mm	543mm	13.5W	0.56A	1150lm	CE	Stand alone	0.65kg
BLT32W500L60-MC	559mm	543mm	13.5W	0.56A	1150lm	CE	In series	0.65kg
BLT32W750L60-M	809mm	793mm	20.5W	0.85A	1750lm	CE	Stand alone	0.8kg
BLT32W1000L60-M	1059mm	1043mm	27W	1.2A	2300lm	CE/UL	Stand alone	1kg

Wiring

Series	Pre-moulding connector	Pin out	Connector model	Wiring Diagram
BLT32 (DC)		 Male: 1, 3 Female: 1, 3	※This model is 2m cable, the other length can be customized EK3-2M/P00 EK4-2M/P00 EK3 EZ3-2M/P00 (Double ended)	

Models	BLT32W250L60-MC	BLT32W500L60-MC
Cascade Qty	8	4

Mounting brackets (mm)



The default matching mounting brackets, angle adjustable, 304 stainless steel, each lamp with two mounting brackets

