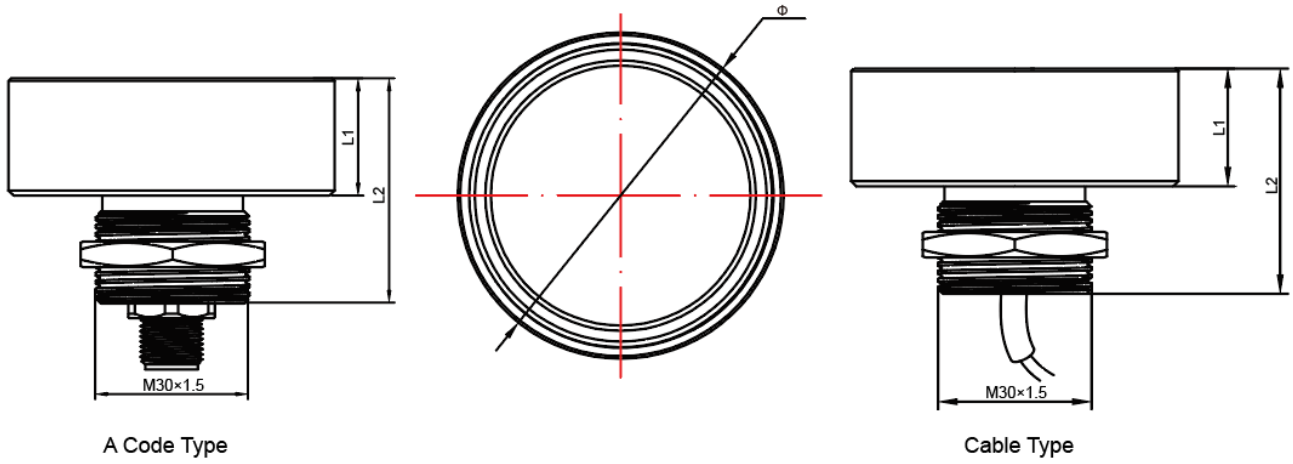


Specifications

Basic Information				
Series	Circular LED Light BL50GW&BL64GW			
Model	BL50GWL25、BL50GWL25/2M、BL64GWL25、BL64GWL25/2M			
Technical Data				
Physical Data	Material	Aluminium + Glass	Color	Black
	IP Degree	IP67		
Optical Data	CCT	5700K	Ra	>80
	L70	50000H	Luminous Efficiency	>85 lm/w
	Beam Angle	30°		
Electrical Data	Power supply	DC/AC 24V	Connection	M12 plug connector, A coded/2m Cable
	Electrical protection grade	III	Reverse polarity protected	Yes
Other Data	Operating Conditions	-35~60°C	Storage Condition	-40~70°C

Pictures of Lamps&Sizes (mm)





Models	Φ	L1	L2	Power	Current(DC24V)	Luminous Flux	Wiring	CERT	Weight
BL50GWL25	50mm	21	42	2.5W	0.1A	210lm	Connector	CE	0.13kg
BL50GWL25/2M	50mm	21	42	2.5W	0.1A	210lm	2m Cable	CE	0.18kg
BL64GWL25	64mm	23	44	4.2W	0.17A	350lm	Connector	CE	0.25kg
BL64GWL25/2M	64mm	23	44	4.2W	0.17A	350lm	2m Cable	CE	0.3kg

Wiring

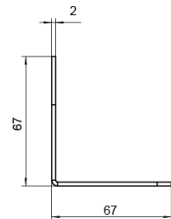
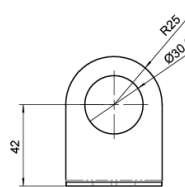
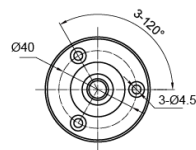
Model	Pre-moulding connector	Pin out	Connector model	Wiring Diagram
BL50GWL25 BL64GWL25 (A Code Type)			※This model is 2m cable, the other length can be customized EK3-2M/P00 EK4-2M/P00	
BL50GWL25 BL64GWL25 (Cable Type)				

Mounting brackets (mm)



1. Flex Arm Mounts(For cabled models only)
Type NO.: BLZ-01

Reprovision bracket, Flex arm diameter 13mm, the default length 400mm, the angle can be adjusted, circular base.



2.Right-angle Bracket
Type NO.: BLZ-L01

Reprovision bracket, angle adjustable, 304 stainless steel, each lamp with a mounting bracket

